
QUICKGEL®

OPTIONS | FOR MANUAL
ELECTROPHORESIS



HELENA
LABORATORIES

QuickGel® System

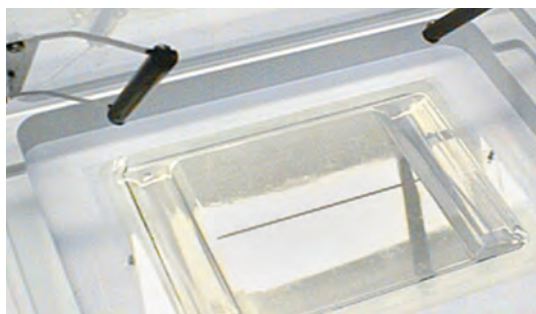


Cat. No. 1284 QuickGel Chamber

Small in Size – *Big on Quality!*

QuickGel electrophoresis products are compact and easy to use, allowing cost-effective manual separations without sacrificing quality or accuracy.

The **QuickGel Chamber** features a cooled electrophoresis platen and built-in carbon electrodes. The cooled platen prevents protein degradation and provides crisp separations. Just set a QuickGel in place and close the lid to begin electrophoresis.



The **QuickGel Chamber** also serves as an incubator and dryer by simply changing out the lid. Get it all – electrophoresis, incubation and drying – in a tiny 8.5" x 10.5" footprint.



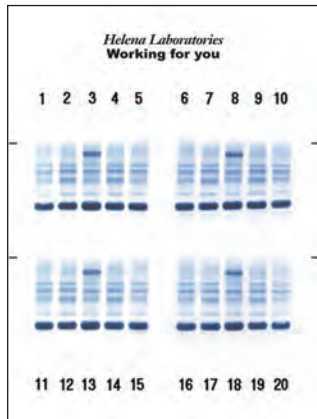
Cat. No. 1504, 1505 TITAN Plus Power Supply

Recommended for use with the **QuickGel Chamber** is the completely solid state TITAN Plus Power Supply. A digital voltage and current display provides greater accuracy in voltage selection. Synchronous timer assures precise control with automatic end-of-run signal and shut-off.

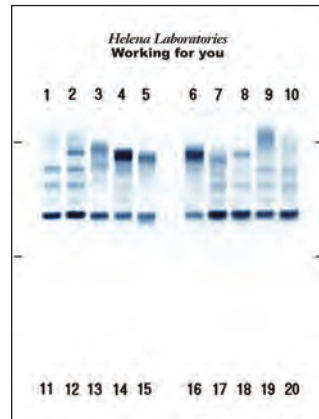
QuickGel® Assays

Sized for Smaller Volume Testing

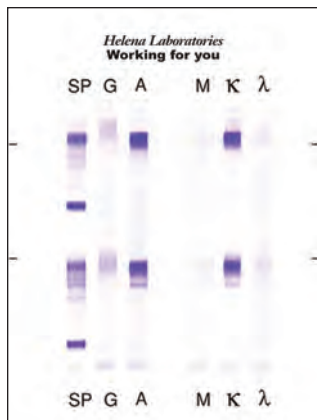
QuickGels are ideal for small runs or small volumes, separating up to 10 samples per run (or 20 for some assays), efficiently and cost-effectively. Like all of Helena's premium agarose gels, QuickGels have built-in buffer ridges for ease of use and separations that are crisp and clear.



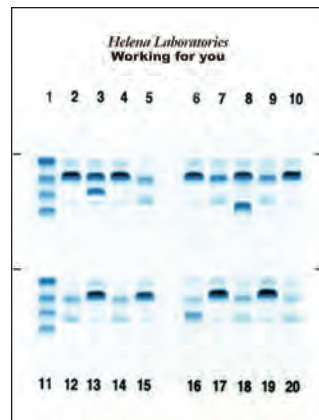
Split Beta SPE



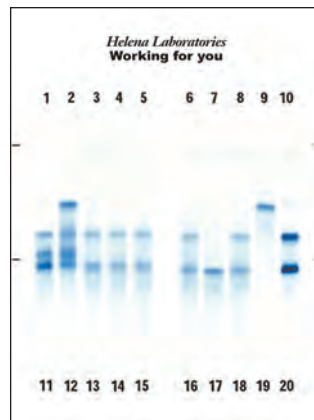
SPE Classic



ImmunoFix



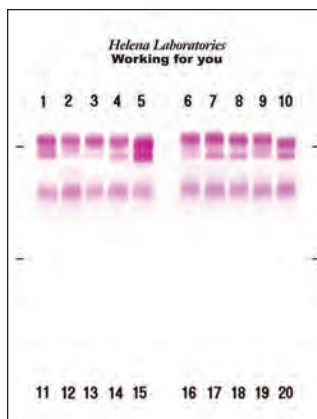
Acid Hemoglobin



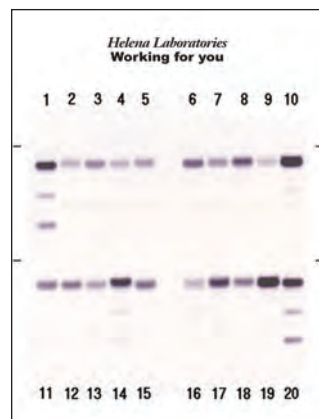
Alkaline Hemoglobin



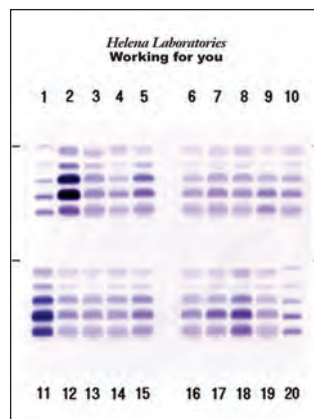
Cholesterol



Lipoprotein



CK Isoenzyme



LD Isoenzyme

QuickGel SPE – Split Beta or Classic

Whether you choose split-beta or classic 5-banded gels, resolution is excellent.

QuickGel IFE

Profile two different patients on one gel or profile a patient's serum and urine simultaneously.

QuickGel Acid & Alkaline Hemoglobins

Both Alkaline and Acid Hemoglobin QuickGel methods use acid blue stain for excellent sensitivity and stability in storage.

QuickGel Cholesterol

Directly and accurately measure HDL, LDL, VLDL and Lp(a).

QuickGel Lipoprotein

Separate and quantitate the major lipoprotein fractions.

QuickGel CK & LD Isoenzymes

Separate major isoenzyme fractions quickly and efficiently.

Kits come with gels and supplies for 10 samples per gel. Additional QuickGel application blades and templates are available for up to 20 samples per gel on some assays.

Good things do come in small packages.

QUICKGEL ASSAYS/MANUAL ELECTROPHORESIS

Cat No	Item	Description
3505	QuickGel SPE Vis	10/20 samples
3505T	QuickGel SPE Vis	10/20 samples
3519	QuickGel Acid Hemoglobin	10/20 samples
3529	QuickGel Alkaline Hemoglobin	10 samples
3529T	QuickGel Alkaline Hemoglobin	10 samples
3534T	QuickGel CK Isoenzyme	10/20 samples
3538T	QuickGel LD Isoenzyme	10/20 samples
3543T	QuickGel Cholesterol	10/20 samples
3550	QuickGel Split-Beta SPE	10/20 samples
3550T	QuickGel Split-Beta SPE	10/20 samples
3551T	QuickGel ImmunoFix	1 or 2 profiles
3544T	QuickGel Lipoprotein	10 samples

Note: "T" indicates template application kits

Kits come with gels, applicators and supplies for 10 samples per gel. Additional QuickGel applicators can be purchased to accommodate up to 20 samples per gel on same assays.

QUICKGEL MANUAL ELECTROPHORESIS SYSTEM

Cat No	Item	Description
1265	QuickGel Applicator	1/pkg
1274	QuickGel Applicator Kit (Applicator, Base, Weights and Cup Tray)	
1266	QuickGel Applicator Base	1/pkg
1270	QuickGel Applicator Blades (For all QuickGel assays except Split-Beta Proteins)	10/pkg
1271	QuickGel Modified Applicator Blades (For QuickGel Split-Beta Proteins)	10/pkg
1267	QuickGel Applicator Weights	2/pkg
1284	QuickGel Chamber	110/220V
1285	QuickGel Chamber Contact Sheets	5/pkg
1268	QuickGel Dispo Cup Tray	1/pkg
1259	QuickGel Dispo Cups - Deep Well	50/pkg
1258	QuickGel Dispo IFE Sample Cups	50/pkg
1269	QuickGel Dispo Sample Cups	50/pkg
9107	Service Manual for QuickGel Chamber	110/220V
1504	Titan Plus Power Supply	110V
1505	Titan Plus Power Supply	220V

Need small runs for your SPIFE analyzer?

Try QuickGels for SPIFE.

Ask your local Helena Representative for more information.

CONTACT

Address

Helena Laboratories
1530 Lindbergh Drive
Beaumont, Texas 77707

Phone & Email

Toll free: 800-231-5663
Phone: 409-842-3714 + Ext.
Email: helena@helena.com

Online

www.helena.com

