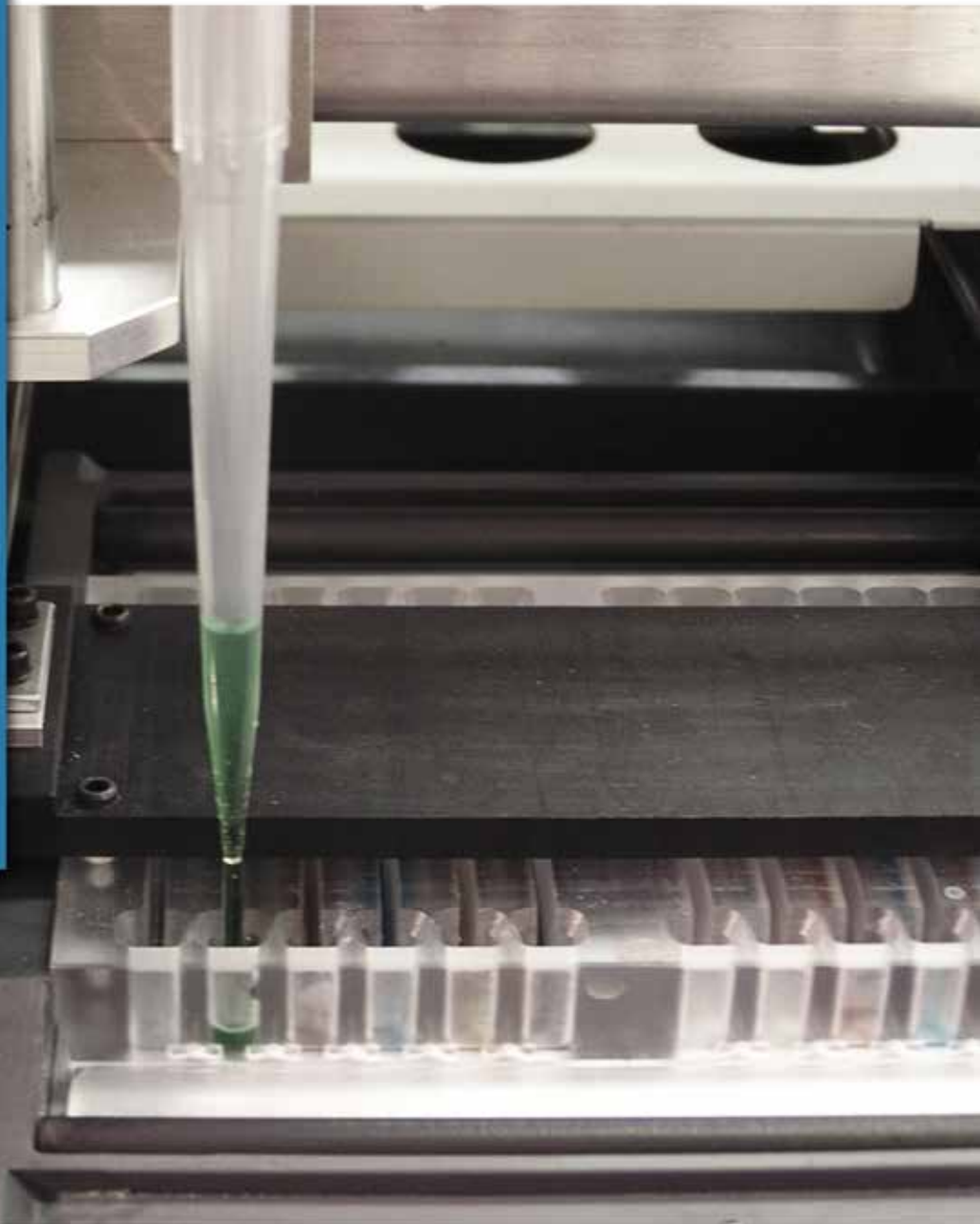


SPIFE[®] 4000



AUTOMATED
ELECTROPHORESIS



Total batch-mode, walkaway electrophoresis automation is here and is called SPIFE 4000! Just load the sample tubes, press go, and return for your printed IFE and SPE results. SPIFE 4000 eliminates ALL manual steps for these assays – there's no sample application, no stains or antisera to add, no gel transfers, no dilutions to perform, no gel blocks to remove, no tech-to-tech variability – just load and walk away. A full day's mixed run of SPEs and IFEs takes about 30 minutes of tech time for set up, then frees the tech to perform other tasks. With SPIFE 4000's hands-off approach, a laboratory can reasonably expect to be able to run 24 hours per day 7 days a week.



Automated Immunofixation

- Color-coded antisera stored on-board, ready to use
- Antisera applied through rigid template to eliminate crossover
- Auto press and blot to assure clear background

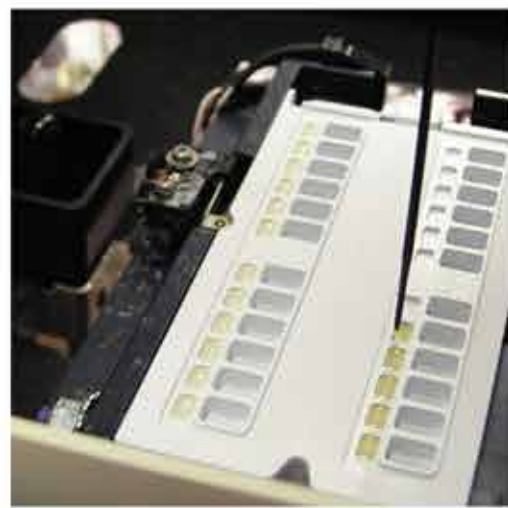
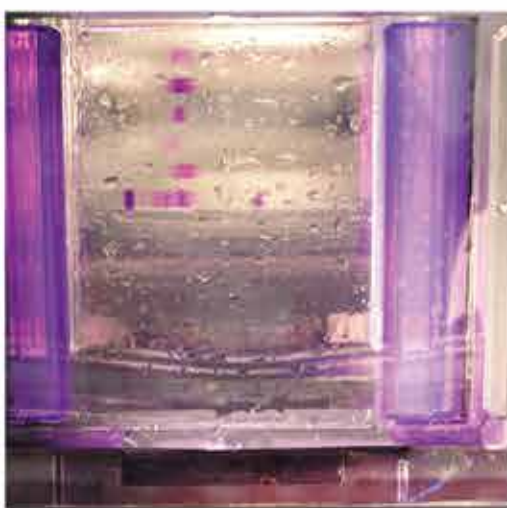
Automated Staining and Drying

- On-board staining with no gel transfers
- Destain and wash for clear backgrounds
- Automated drying and transfer to scanner

Auto Sampling for SPE & IFE

- Liquid level sensing
- Auto dilutions for immunofixation
- Positive ID from tube to gel to final report

SPIFE[®] 4000 FEATURES



New Hemoglobin Assays

SPIFE 4000 alkaline, acid and IEF hemoglobin assays are now available for detecting and identifying hemoglobinopathies. Hemolysates are prepared and added to sample trays. Once trays and supplies are loaded, SPIFE 4000 does the rest, from sample application to final results without user intervention.



Auto Applicator and Electrophoresis

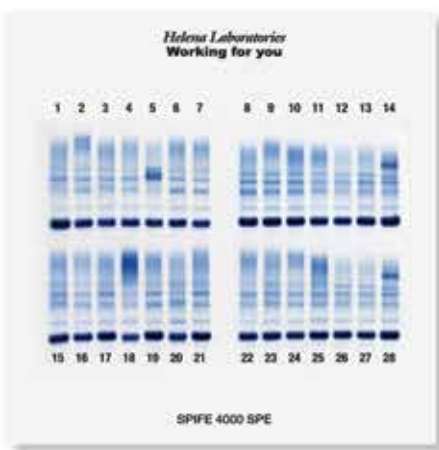
- Auto sample application to gels
- Application system unaffected by triglycerides or large proteins
- Peltier-driven temperature controlled chamber

Integrated Auto Scanning

- Automatic setting of scan parameters
- Full editing and interpretation capabilities
- Final results can be printed and/or exported to LIS

Powerful User Interface

- Bi-directional LIS interface
- System provides status of each gel in process
- On-screen system alerts



SPIFE 4000 Assays

Auto IFE

SPIFE 4000 automatically performs all the steps for immunofixation.

- Sample handler performs all the needed dilutions and applies samples to gels.
- Antisera are automatically applied to gels. Affinity and avidity of the antisera are balanced for best sensitivity with the least amount of blush.
- Auto Press and Blot assures clear backgrounds, before moving into the auto stainer
- Throughput Four profiles per gel; up to 100 IFEs per 8 hours.

Cat. No. 2300 – 40 tests

Cat. No. 2301 – 400 tests

Auto SPE

- SPIFE 4000 totally automates protein electrophoresis with excellent resolution and sensitivity. Application system is unaffected by triglycerides or large proteins.
- Active cooling provides excellent split-beta separation with no degradation.
- Throughput 28 samples per gel; up to 756 per 8 hours.

Cat. No. 2310 – 280 tests

Cat. No. 2311 – 2800 tests

Alkaline Hb

SPIFE 4000 can perform alkaline hemoglobin separation of eight samples per gel, with three gels per run.

- Mobilities mimic traditional cellulose acetate
- Acid blue stain enhances linearity and visualization
- Automated from sample application to finished gel

Cat. No. 2320 – 80 tests

Acid Hb

Separate up to 14 acid hemoglobin samples per gel and up to three gels per run on SPIFE 4000.

- Aids in identifying hemoglobinopathies
- Stable in storage with acid blue stain
- Excellent separations

Cat. No. – 140 tests

Hb IEF

SPIFE 4000 automates isoelectric focusing of hemoglobins on up to 14 samples from sample application to finished gel.

- Produces crisp, sharply resolved hemoglobin bands
- Aids in distinguishing hemoglobin variants
- Final results in 75 minutes

Cat. No. 2325 – 140 tests

SPIFE 4000 Specifications

Media Types: Agarose gels

Maximum Sample Size: 5 x 5 in. (12.7 x 12.7 cm)

Input Power:

120 VAC, 60 Hz, 1000 Watts

230 VAC, 50 Hz, 1000 Watts

Dimensions (Instrument & Fluids Table):

Height x Width x Depth:

60 x 79 x 32" (152.4 x 200.7 x 81.3 cm)

Total Weight: 350 lbs (158.8 kg)

Environment: 15° to 27°C (59° to 80°F)

Densitometer Specifications:

Scanning Parameters:

Gain: Automatic or Manual

Over range: > 100% of full scale

Optics Mode:

Visible Transmittance (white light)

Scan Length: Variable from 0.01 to 221.5 mm

Light Source: Cold Cathode Fluorescent
(white light)

Light Detectors: CCD Array

Optical Density Linearity: 0.05 to 2.3

Operating System: Microsoft® Windows® XP

Electrophoresis Specifications:

Electrophoresis Timer Range:

1 sec. to 90 min. in 1 second increments

Chamber Temperature Range: 10°C to 30°C

Pre-Drying Temperature Range: 30° to 62°C

Final Drying Temperature Range:

30° to 65°C (86° to 149°F)

Fuses: F1, F2 15A/250V slow blow

Pump System: 5 peristaltic pumps,
1 syringe pump

Test Tubes:

13-16 mm diameter, 75-100 mm height
(Minimum sample volume 500 µL)

**For more information,
call toll free 800-231-5663
www.helena.com**

