

# HELENA TITAN® IV CITRATE HEMOGLOBIN ELECTROPHORESIS



The Helena Titan® IV Citrate Hemoglobin Electrophoresis Procedure is intended as a qualitative procedure for the identification of human hemoglobins.

## SUMMARY

Hemoglobins (Hb) are a group of proteins whose chief functions are to transport oxygen from the lungs to the tissues and carbon dioxide in the reverse direction. They are composed of polypeptide chains called globin, and iron protoporphyrin heme groups. A specific sequence of amino acids constitutes each of four polypeptide chains. Each normal hemoglobin molecule contains one pair of alpha and one pair of non-alpha chains. In normal adult hemoglobin (HbA), the non-alpha chains are called beta. The non-alpha chains of fetal hemoglobin are called gamma. A minor (3%) hemoglobin fraction called HbA<sub>2</sub> contains alpha and delta chains. In a hereditary inhibition of globin chain synthesis called thalassemia, the non-alpha chains may aggregate to form HbH (β4) or Hb Bart's (α4).

The major hemoglobin in the erythrocytes of the normal adult is HbA and there are small amounts of HbA<sub>2</sub> and HbF. In addition, over 400 mutant hemoglobins are now known, some of which may cause serious clinical effects, especially in the homozygous state or in combination with another abnormal hemoglobin. Wintrobe<sup>1</sup> divides the abnormalities of hemoglobin synthesis into three groups;

- (1) production of an abnormal protein molecule (e.g. sickle cell anemia),
- (2) reduction in the amount of normal protein synthesis (e.g. thalassemia), and
- (3) development anomalies (e.g. hereditary persistence of fetal hemoglobin, HPFH).

The two mutant hemoglobins most commonly seen in the United States are HbS and HbC. Hb Lepore, HbE, HbG-Philadelphia, HbD-Los Angeles, and HbO-Arab may be seen less frequently.<sup>2</sup> Electrophoresis is generally considered the best method for separating and identifying hemoglobinopathies. The protocol for hemoglobin electrophoresis involves the use of two systems.<sup>3-8</sup> Initial electrophoresis is performed in alkaline buffer. Cellulose acetate is the major support medium used because it yields rapid separation of HbA, HbF, HbS and HbC and many other mutants with minimal preparation time. However, because of the electrophoretic similarity of many structurally different hemoglobins, the evaluation must be supplemented by citrate agar electrophoresis which measures a property other than electrical charge. This simple procedure requires only minute quantities of hemolysate to provide highly specific (but not absolute) confirmation of the presence of HbS, HbC and HbF, as well as several other abnormal hemoglobins.

## PRINCIPLE

Very small samples of hemolysates prepared from whole blood are applied to the Titan® IV Citrate Agar Plate. The hemoglobins in the samples are separated by electrophoresis using citrate buffer, pH 6.0 to 6.3 and are stained with an o-Dianisidine or o-Tolidine staining solution. Separation of hemoglobins under these conditions depends both on the location of the substituted residue and on its electrophoretic charge. The method is based on the complex interactions of the hemoglobin with the electrophoretic buffer (acid pH) and the agar support.

## REAGENTS

### 1. Titan® IV Citrate Agar Plates (Cat. No. 2400)

**Ingredients:** Plates contain 1.5% agar (w/v) in 0.03 M citrate buffer with thimerosal added as a preservative.

**WARNING: FOR IN-VITRO DIAGNOSTIC USE ONLY.**

**Preparation for Use:** The plates are ready for use as packaged.

**Storage and Stability:** Plates should be stored flat at 2° to 6°C and are stable until the expiration date indicated on the label. Store in the protective packaging in which the plates are shipped. **DO NOT FREEZE THE PLATES OR EXPOSE THEM TO EXCESSIVE HEAT.**

**Signs of Deterioration:** The plates should have a smooth, clear surface. Discard the plates if they appear cloudy, show fungal or bacterial growth, or if they have been exposed to freezing (a cracked or bubbled surface) or excessive heat (a dried, thin surface).

### 2. Citrate Buffer (Cat. No. 5121)

**Ingredients:** Each package of Citrate Buffer contains sodium citrate and citric acid.

**WARNING: FOR IN-VITRO DIAGNOSTIC USE ONLY. DO NOT INGEST.**

**Preparation for Use:** Dissolve one package of buffer in 1000 mL of deionized water. The buffer is ready for use when all material is dissolved and completely mixed.

**Storage and Stability:** The packaged buffer should be stored at room temperature (15° to 30°C) and is stable until the expiration date indicated on the package. Diluted buffer is stable for one month at 2° to 6°C.

**Signs of Deterioration:** Do not use packaged buffers if the material shows signs of dampness or discoloration. Discard diluted buffer if it becomes turbid.

### 3. Hemolysate Reagent (Cat. No. 5125)

**Ingredients:** Hemolysate Reagent is an aqueous solution of 0.005 M EDTA and 0.07% potassium cyanide as hemoglobin preservatives.

**WARNING: FOR IN-VITRO DIAGNOSTIC USE ONLY. DO NOT PIPETTE BY MOUTH. HARMFUL IF SWALLOWED.**

**Preparation for Use:** The reagent is ready for use as packaged.

**Storage and Stability:** The reagent should be stored at room temperature (15° to 30°C) and is stable until the expiration date indicated on the vial.

**Signs of Deterioration:** The reagent should be a clear, colorless solution.

### 4. Stains

#### a. o-Dianisidine (Cat. No. 5036)

**Ingredients:** 0.2% (w/v) 3,3 dimethoxybenzidine in methanol after reconstitution.

**WARNING: FOR IN-VITRO DIAGNOSTIC USE ONLY. CARCINOGEN. DO NOT INGEST. AVOID CONTACT WITH SKIN.** The reagent is highly toxic and can cause skin irritation. Should reagent come into contact with skin, wash with copious amounts of water. Harmful if swallowed.

**Preparation for Use:** Dissolve one vial of stain with 1 L methanol.

**Storage:** The stain should be stored at room temperature (15° to 30°C) and is stable until the expiration date on the vial.

**Signs of Deterioration:** The reagent should be light yellow-brown. Discard reagent if it becomes dark brown and/or contains precipitate.

**b. o-Tolidine (Cat. No. 5041) (may be substituted for o-Dianisidine)**

**Ingredients:** 0.2% (w/v) o-Tolidine in methanol after reconstitution.

**WARNING: FOR IN-VITRO DIAGNOSTIC USE ONLY. SUSPECTED CARCINOGEN. DO NOT INGEST. AVOID CONTACT WITH SKIN.** The reagent is highly toxic and can cause skin irritation. Should the reagent come into contact with skin, wash with copious amounts of water. Harmful if swallowed.

**Preparation for Use:** Dissolve the contents of one vial with 1 L methanol.

**Storage and Stability:** The stain should be stored at room temperature (15° to 30°C) and is stable until the expiration date on the vial.

**Signs of Deterioration:** The reagent should be light yellow-brown. Discard reagent if it becomes dark brown and/or contains precipitate.

**SPECIMEN COLLECTION AND HANDLING**

**Specimen:** Whole blood collected in tubes containing EDTA is the specimen of choice.

**Specimen Preparation:** Specimen hemolysates are prepared as outlined in the STEP-BY-STEP METHOD.

**Specimen Storage:** Whole blood samples may be stored up to one week at 2° to 6°C.

**PROCEDURE**

**Materials required:** The following materials required for the procedure are available from Helena Laboratories.

**HARDWARE**

Item	Cat. No.
Zip Zone® Applicator	4080
Zip Zone® Sample Well Plate (2)	4081
Titan IV Aligning Base	4083
Zip Zone® Chamber	1283
Microdispenser and Tubes	6008
Zip Zone® Sponge Wicks	9014
Titan Plus Power Supply	1504
EWS Power Supply	1520

**CONSUMABLES**

Titan® IV Citrate Agar Plates	2400
Citrate Buffer	5121
AFSC Hemo Control	5331
o-Dianisidine	5036
o-Tolidine	5041
Hemolysate Reagent	5125
Blotters	5034
Hemoglobin Report Forms (1 pad)	5212
Helena Marker	5000

**Materials needed but not supplied:**

- Hydrogen peroxide (3%)
- Glacial acetic acid (Dilute 5 parts with 95 parts deionized water, to yield 5% solution.)
- Absolute Methanol
- 1% Sodium nitroferricyanide

**SUMMARY OF CONDITIONS**

Plate .....	Titan® IV Citrate Agar
Buffer .....	Citrate Buffer diluted to 1000 mL
Sample volume (Hemolysate) .....	5µL
Application point .....	Anode
Number of applications .....	one (1) or two (2)
Electrophoresis time .....	45 minutes
Voltage .....	50 V
Staining time .....	5 to 10 minutes

**STEP BY STEP METHOD**

**A. Preparation of Titan® IV Citrate Agar Plate**

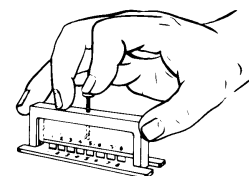
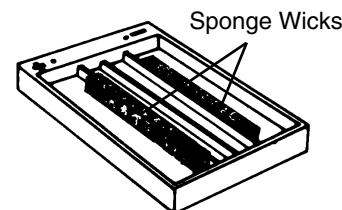
1. Remove the Titan® IV Citrate Agar Plate from the refrigerator and allow the plate to come to room temperature (15-30°C) while preparing the patient samples.
2. Remove the plate from the plastic bag and properly identify it by marking with a marker on the plastic support backing of the agar filled half of the plastic plate. Place the mark in one corner so that it will be aligned with sample No. 1.

**B. Preparation of Patient Sample and the Control**

1. To prepare a hemolysate of the patient sample, add one (1) part of whole blood to 19 parts Hemolysate Reagent. Alternatively, if removal of denatured hemoglobins from the sample is deemed necessary; washed cells should be used.
  - a. Centrifuge the blood sample at 3500 RPM for 5 minutes.
  - b. Remove the plasma from the sample and wash the red blood cells in 0.85% saline (v/v) three times. After each wash, centrifuge the cells for 10 minutes at 3500 RPM.
  - c. Add 1 volume deionized water and 1/4 volume toluene (or carbon tetrachloride) to the washed red cells. Vortex at high speed for one minute. Centrifuge the samples at 3500 RPM for 10 minutes.
  - d. If toluene is used, the top layer in the tube will contain cell stroma and should be removed with a capillary pipette before proceeding to the next step. The clear middle layer contains the desired sample. If carbon tetrachloride is used, all red cell waste material will be contained in the bottom of the tube after centrifugation.
  - e. Filter the clear red solution through two layers of Whatman #1 filter paper
2. Prepare the AFSC Hemo Control by adding one (1) part of the control to one (1) part Hemolysate Reagent.
3. Mix all hemolysate preparations well. Cover the tubes and allow to stand for five (5) minutes.

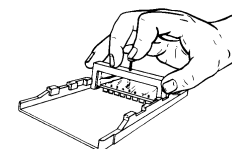
**C. Preparation of Zip Zone® Chamber**

1. Pour approximately 100 mL of Citrate Buffer into each outer section of the Zip Zone® Chamber.
2. Wet two sponge wicks in the buffers, and place the sponges in each outer compartment so that the top surface protrudes approximately 2 mm above the inner chamber ridges. (Care should be taken to rinse all buffer from the sponges before each use.) Gently press the sponge to assure complete saturation with buffer.



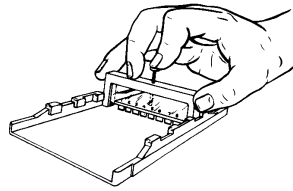
**D. Sample Application**

1. Mix the hemolysate solutions once more to insure complete lysis.
2. Place 5 µL of each prepared hemolysate (patient and control) in separate wells of the Zip Zone® Sample Well Plate using the Microdispenser. Cover the Sample Well Plate with a glass slide if the samples are not used within 2 minutes.
3. To prime the Zip Zone® Applicator, quickly press the tips into the sample wells 3 or 4 times and apply to a blotter. Priming the applicator makes the second loading more uniform. Do not load the applicator again at this point, but proceed quickly to the next step.
4. Remove the cover from the Titan® IV Citrate Agar Plate. Position the plate in the Titan IV Aligning Base. The



identification mark should be aligned with sample No. 1.

- If desired, the spring can be removed from the applicator, allowing the applicator to rest upon the agar without cutting into it. To apply the sample to the plate, press the applicator tips into the sample wells 3 or 4 times and promptly transfer the applicator to the first set of stanchions on the Titan IV Aligning Base. Gently press the applicator tips down onto the gel surface. Allow the samples to soak into the agar for about one minute.



To run 16 samples on one plate, use a second Zip Zone® Sample Well Plate and fill the wells with a second set of hemolysates (patient and control). Using a clean Zip Zone® Applicator, place the applicator in the second set of stanchions on the Titan IV Aligning Base and apply the samples to the plate in the same manner as before.

#### E. Electrophoresis of the Sample Plate

- Quickly put the plate, agar side down, in the Zip Zone® Chamber so that the agar layer makes good contact with the top surface of the sponges. The first application point should be nearest the anode (+).
- Place the lid on the chamber and ensure that it is completely seated.
- Electrophorese for 45 minutes at 50 volts. Electrophoresis time may be increased to 60 minutes, if additional separation of HbS from the application point is desired.

#### F. Visualization of the Hemoglobin Bands

- Prepare the staining solution while electrophoresis is in progress. The reagents in this staining solution should be kept in separate bottles, mixed just prior to use, and discarded after each use. Prepare the staining solution as follows:
  - 5 mL 0.2% o-Dianisidine (o-Tolidine may be substituted)
  - 10 mL 5% acetic acid
  - 1 mL 3% hydrogen peroxide
  - 1 mL 1% sodium nitro ferricyanide
- Upon completion of electrophoresis, remove the plate from the chamber and place on the counter top, agar side up.
- Puddle the stain over the entire surface of the plate and stain for 5 to 10 minutes. Plates may also be immersed in the stain, but a greater volume of stain is required.
- The hemoglobins present in the patient samples should be identified by comparison to the migration pattern of the AFSC Hemo Control. For immediate visualization, pour off the stain.
- If permanent storage is desired:
  - Wash in 5% acetic acid for 30 minutes.
  - Rinse in deionized water for 10 minutes.
  - Hold the plate under gently running water.
  - Cut the agar in half, then slide a 3 x 5 card under the stained half of the agar and remove it from the holder.
  - Flood the agar surface with 2% glycerol for 35 minutes.
  - Tilt and drain the plate onto a blotter for 2 minutes.
  - Lay the plate on a fresh blotter, then dry at 50°C for 1 hour and 20 minutes or dry at 37°C for 3 to 4 hours.
  - Add an I.D. label.

**Stability of End Product:** The unpreserved plates are stable for three months if kept tightly closed. Dried plates are stable indefinitely.

**Quality Control:** The Helena AFSC Hemo Control (Cat. No. 5331) should be run on each Titan® IV Citrate Agar Plate. The control verifies all phases of the procedure and acts as a marker to aid in the identification of the hemoglobins in the unknown samples.

## RESULTS

Figure 1 illustrates how a comparison of Citrate Agar and Cellulose Acetate plates can eliminate possible hemoglobins. Figure 2 lists the relative mobilities of various hemoglobin mutants on cellulose acetate and citrate agar plates.

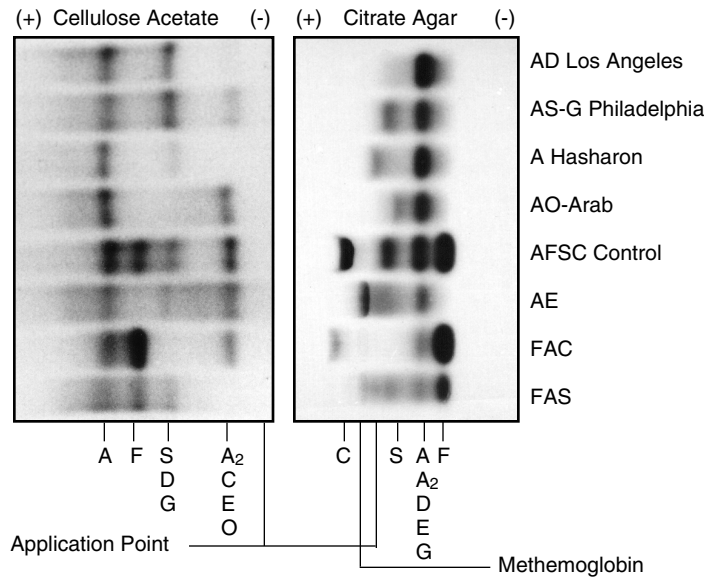


Figure 1. Electrophoretic Mobilities of Hemoglobins on Titan® III Cellulose Acetate and on Titan® IV Citrate Agar.

	Cellulose Acetate					Citrate Agar					
	+	0	-2.6	-5.2	-10	-	-4.4	-0	+5.8	+10	+
	A	F	S	A <sub>2</sub>	C	F	A	S	C		
S				-5.2					+5.8		
C					-10						+10
*E					-10			0			
Lepore			-5					0			
G Philadelphia			-5.2					0			
D Punjab			-5.2					0			
O-Arab					-9.7				+1.7		
*Hasharon				-5.5				+6.25			
H	+8.5							0			
Constant Spring					-11.9			0			
Malmo	+0.5							-1.1			
A <sub>2</sub> '				-11.1				0			
Wood	0							-2.25			
Barts	+7.6							-4.0			
*Köln				-7.5				-2.5			
N Baltimore	+6.6							0			
ASG Philadelphia	0		-5.2	-10				0	+5.8		
J Oxford	+4.6							0			
J Baltimore	+4.3							0			
*Tacoma	+0.9							0			
*Lufkin		+3.2						0			
*Camperdown								0			
K	+0.8							-4.0			
Hope	+0.8							-4.0			
Camdem		+1.6						-2.8			
New York		+1.5						0			
*G San Jose		-3.6						+7.5			
C Harlem					-10.0			+5.8			

O Arab - Migration varies on citrate agar from Hemoglobin A through Hemoglobin S.  
 J Baltimore - Trait is approximately 50% of the total.  
 J Oxford - Trait is approximately 25% of the total.  
 \*Unstable hemoglobin  
 D Los Angeles and D Punjab are the same hemoglobin.  
 C Harlem and Georgetown are the same hemoglobin.  
 Köln is broadly smudged on both media possibly due to instability.

Figure 2. Relative Electrophoretic Mobilities of Hemoglobins on Cellulose Acetate and Citrate Agar.<sup>9</sup>

## REFERENCE VALUES

At birth, the majority of hemoglobin in the erythrocytes of the normal individual is fetal hemoglobin, HbF. Some of the major adult hemoglobin, HbA, and a small amount of HbA<sub>2</sub>, are also present. At the end of the first year of life and through adulthood, the major hemoglobin present is HbA with up to 3.5% HbA<sub>2</sub> and less than 2% HbF.

## INTERPRETATION OF RESULTS

### Hb Electrophoresis

Citrate agar electrophoresis is a necessary followup test for confirmation of abnormal hemoglobins detected on cellulose acetate. Hemoglobins are genetically controlled, and the presence of abnormal hemoglobins is often associated with functional, physical and morphologic abnormalities in the erythrocyte, as well as pathological manifestations, such as hemolytic anemia.

### Sickle Trait

This is a heterozygous state showing HbA and HbS and a normal amount of HbA<sub>2</sub> on cellulose acetate. Results on citrate agar show hemoglobins in the HbA and HbS migratory positions (zones).

### Sickle Cell Anemia

This is a homozygous state showing almost exclusively HbS, although a small amount of HbF may also be present.

### Sickle-C Disease

This is a heterozygous state demonstrating HbS and HbC.

### Sickle Cell - Thalassemia Disease

This condition shows HbA, HbF, HbS and HbA<sub>2</sub>.

In Sickle Cell β<sup>0</sup>-Thalassemia HbA is absent.

In Sickle Cell β<sup>+</sup>-Thalassemia HbA is present in reduced quantities.

### Thalassemia-C Disease

This condition shows HbA, HbF, and HbC. C Disease This is a homozygous state showing almost exclusively HbC.

### Thalassemia Major

This condition shows HbF, HbA and HbA<sub>2</sub>.

## LIMITATIONS

Some abnormal hemoglobins have similar electrophoretic mobilities and must be differentiated by other methodologies such as solubility tests and sickling or heat tests.

### Further testing:

1. Globin chain analysis (both acid and alkaline) and structural studies may be necessary for positive identification.<sup>5</sup>
2. Anion exchange column chromatography is the most accurate method for quantitating HbA<sub>2</sub>. Recommended are Sickle-Thal Quik Column<sup>®</sup> Method (Cat. No. 5334) for quantitation of HbA<sub>2</sub> in the presence of HbS, or the Beta-Thal HbA<sub>2</sub> Quik Column<sup>®</sup> Method (Cat. No. 5341). HbA<sub>2</sub> quantitation is one of the most important diagnostic tests in the diagnosis of β-thalassemia trait.
3. Low levels of HbF (1% to 10%) may be accurately quantitated by radial immunodiffusion using the Helena HbF-QUIPlate Procedure (Cat. No. 9325).

## BIBLIOGRAPHY

1. Wintrobe, M.M., Clinical Hematology, 6th Edition, Lea and Febiger, Philadelphia, 1967.
2. Fairbanks, V.F., Diagnostic Medicine Nov/Dec.:53-58, 1980.
3. Schneider, R.G., et al. Laboratory Identification of the Hemoglobins, Lab Management, August, 29-43, 1981.
4. Center for Disease Control, Laboratory Methods for Detecting Hemoglobinopathies, U.S. Department of Health and Human Services/Public Health Service, 1984.
5. Schneider, R.G., Methods for Detection of Hemoglobin Variants and Hemoglobinopathies in the Routine Clinical Laboratory, CRC Critical Reviews in Clinical Laboratory Sciences, 1978.
6. Schneider, R.G., et al., Abnormal Hemoglobins in a Quarter Million People, Blood, 48(5):629-637, 1976.
7. Huisman, T.H.J. and Schroeder, W.A., New Aspects of the Structure, Function, and Synthesis of Hemoglobins, CRC Press, Cleveland, 1971.
8. Schmidt, R.M., et al., The Detection of Hemoglobinopathies, CRC Press, Cleveland, 1974.
9. Personal communication from Dr. Virgil Fairbanks)

### Titan<sup>®</sup> IV CITRATE HEMOGLOBIN ELECTROPHORESIS

The following items, needed for the performance of the Titan<sup>®</sup> IV Citrate Hemoglobin Electrophoresis Procedure, must be ordered individually.

Item	Cat. No.
Titan <sup>®</sup> IV Citrate Agar Plates	2400
Citrate Buffer	5121
AFSC Hemo Control	5331
o-Dianisidine	5032
o-Tolidine	5040
Hemolysate Reagent	5125
Blotter Pads (76 x 102 mm)	5034
Hemoglobin Report Forms (1 pad)	5212
Helena Marker	5000
Zip Zone <sup>®</sup> Applicator	4080
Zip Zone <sup>®</sup> Sample Well Plate (2)	4081
Titan IV Aligning Base	4083
Zip Zone <sup>®</sup> Chamber	1283
Microdispenser and Tubes (5 uL)	6008
Zip Zone <sup>®</sup> Sponge Wicks	9014
Titan Plus Power Supply	1504
EWS Power Supply	1520

For Sales and Order Information, and Technical or Service Assistance, call 800-231-5663 toll free.

Helena Laboratories warrants its products to meet our published specifications and to be free from defects in materials and workmanship. Helena's liability under this contract or otherwise shall be limited to replacement or refund of any amount not to exceed the purchase price attributable to the goods as to which such claim is made. These alternatives shall be buyer's exclusive remedies.

In no case will Helena Laboratories be liable for consequential damages even if Helena has been advised as to the possibility of such damages.

The foregoing warranties are in lieu of all warranties expressed or implied including, but not limited to, the implied warranties of merchantability and fitness for a particular purpose.

Shaded areas indicate that text has been modified, added or deleted.